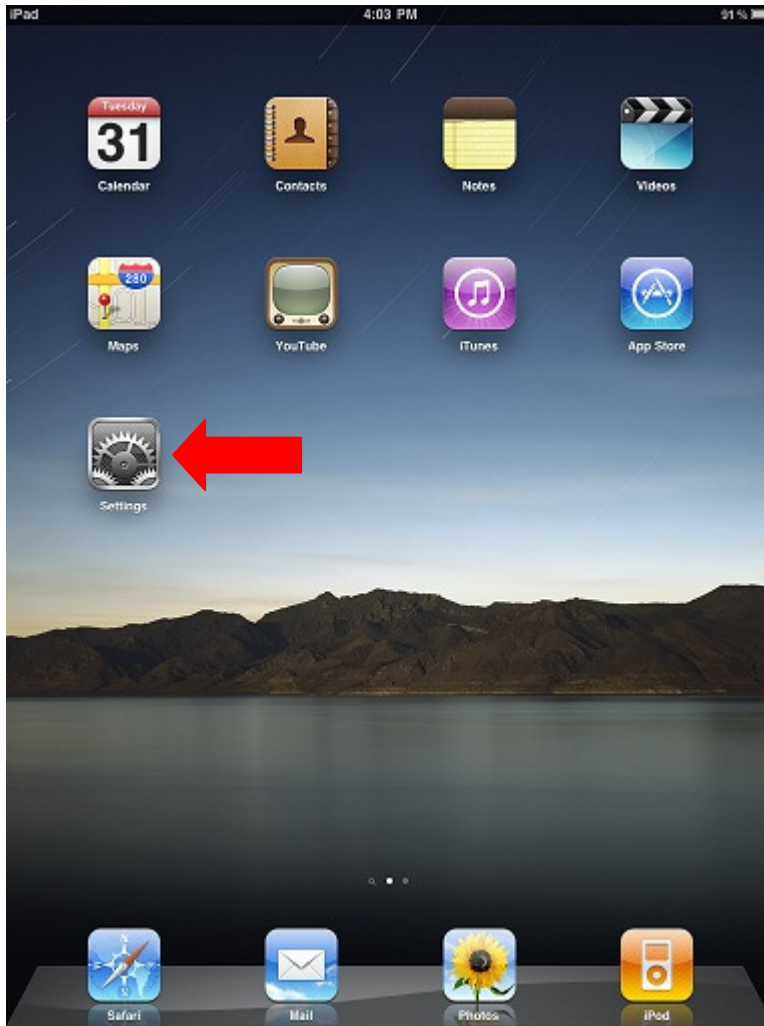


Connecting to Beaumont Network on the iPad

1.) Tap Settings.



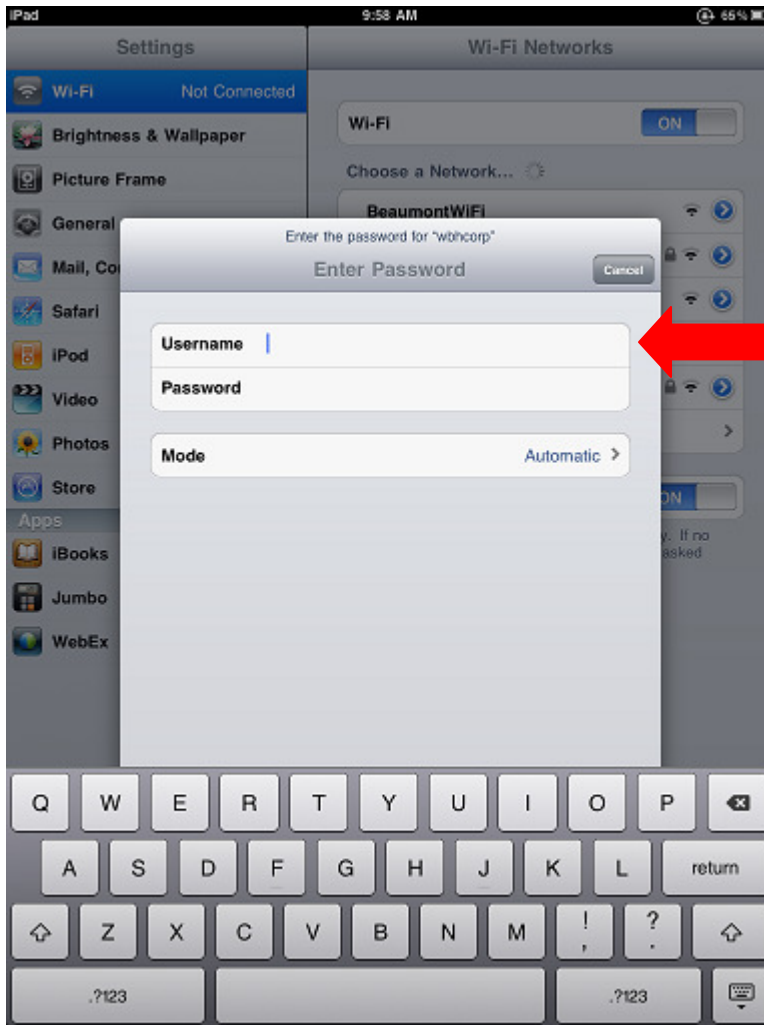
2.) Touch WI-FI.



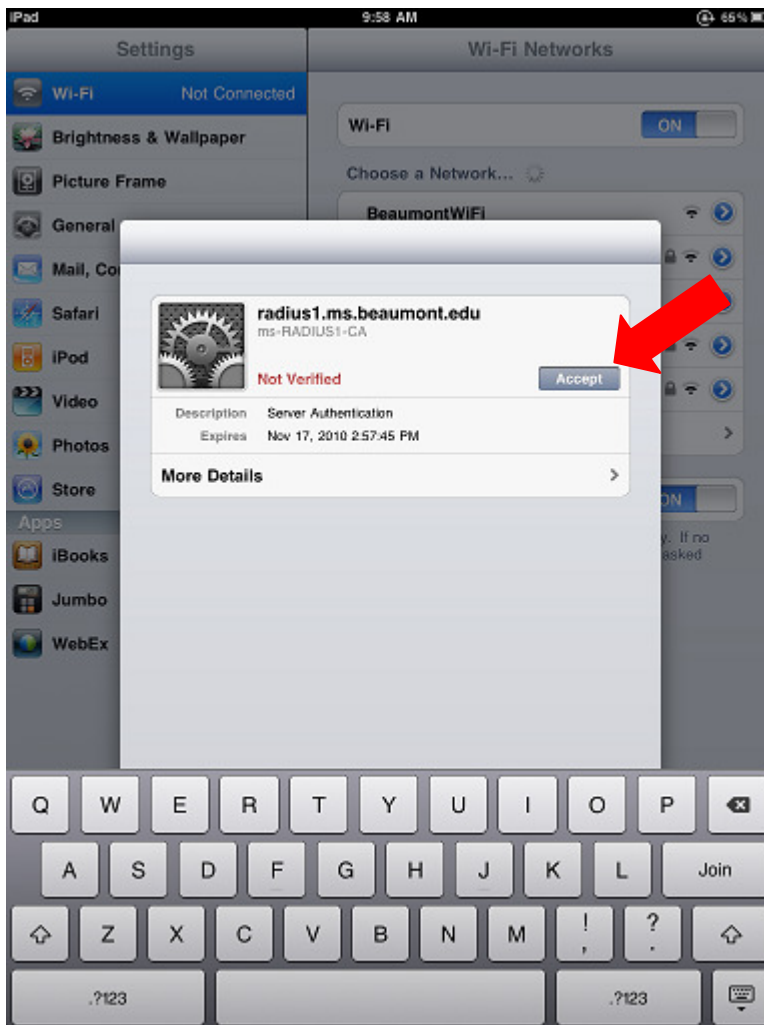
3.) Touch **wbhc corp.**



4.) You will be prompted to enter your network credentials (ID and password).



5.) Once the credentials are verified touch **Accept** to receive the wireless certificate.



- 6.) You should now be connected to the Beaumont corporate wireless network. To verify click on the blue arrow.



7.) This shows the connection status of the device and its assigned IP Address.

